

Touch Driver Install Manual

SPT-4500

(Version 2.0)

www.sam4s.com

Revision A (Apr 9, 2012)

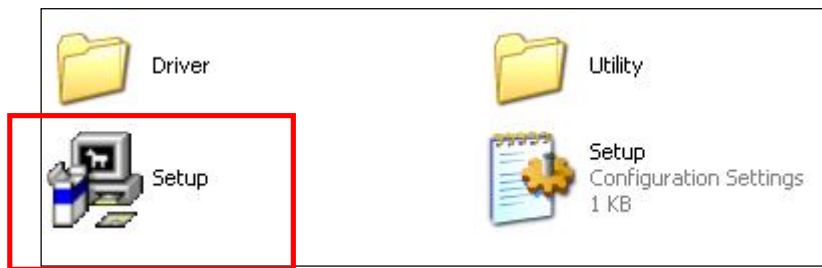
Contents

1. Windows XP.....	3
(1) Installation of Touch Driver.....	3
2. Windows 7	13
(1) Installation of Touch Driver.....	13

1. Windows XP

(1) Installation of Touch Driver

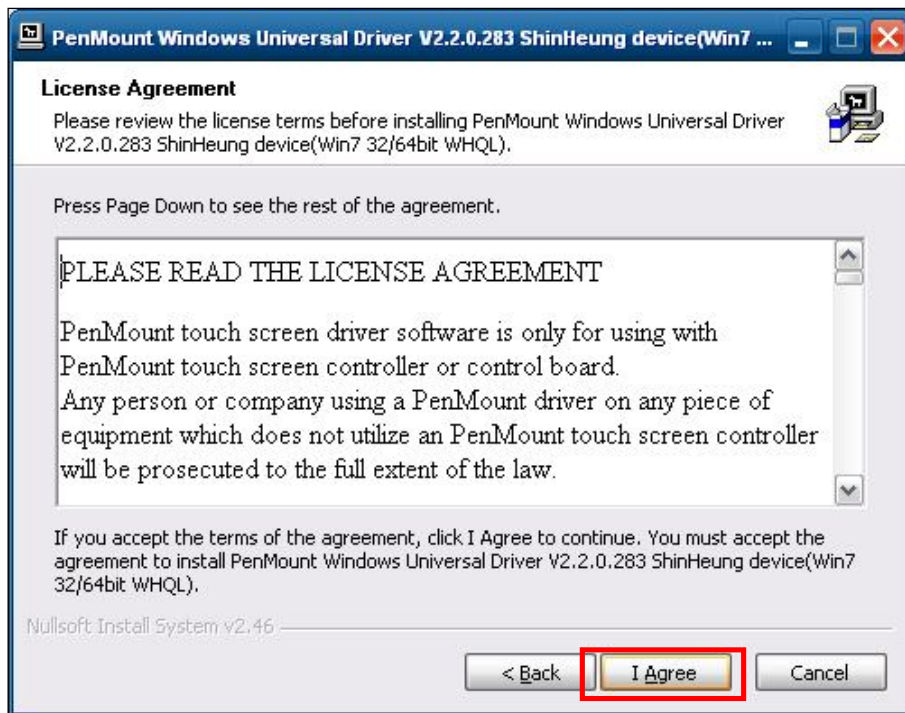
- ① Run '**Setup.exe**' file.



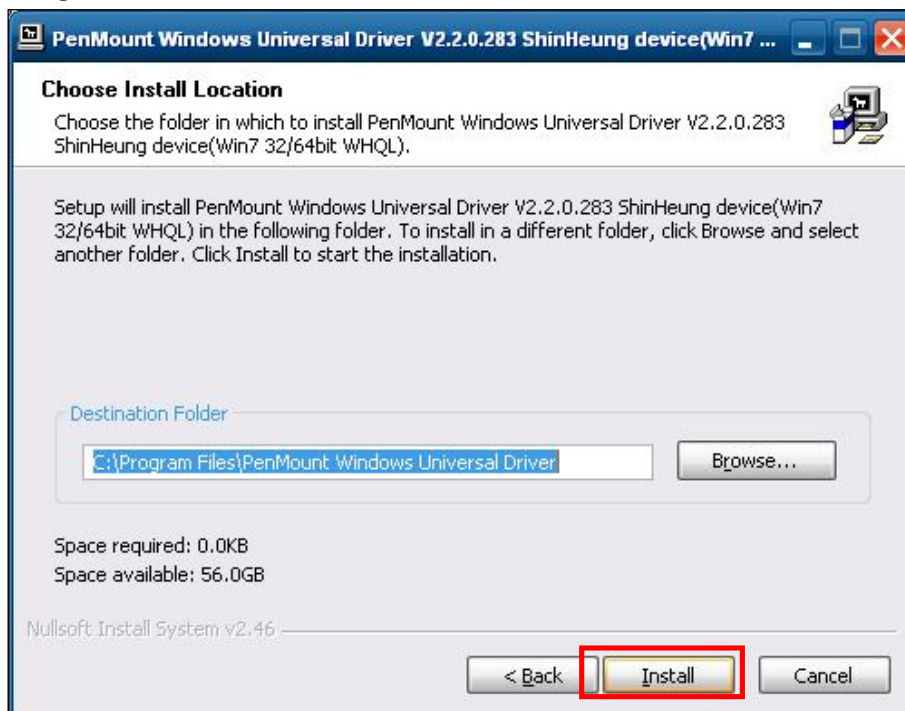
- ② After install wizard starting, click '**Next**' button.



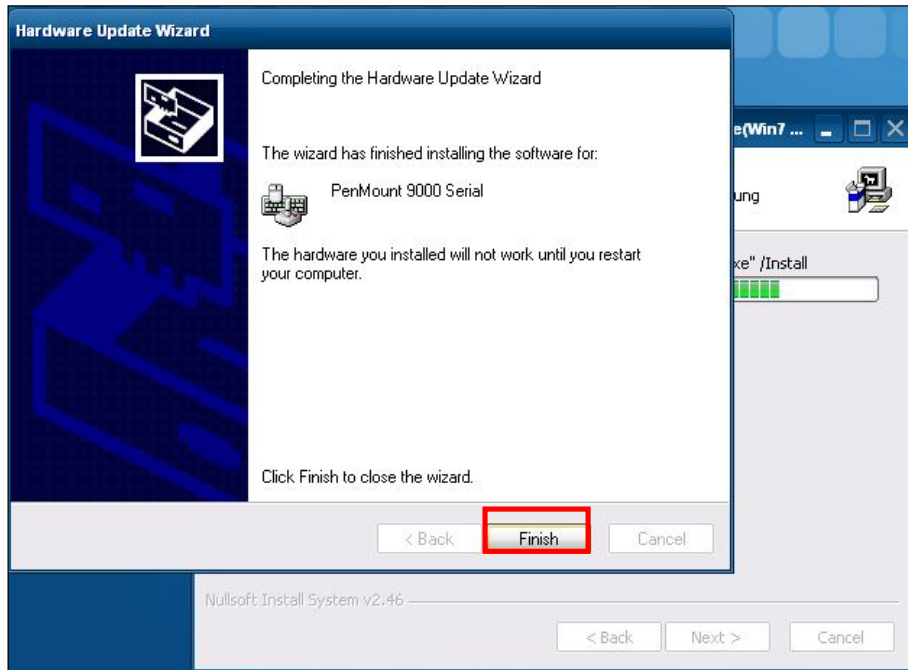
- ③ Agree with license. Click '**I Agree**' button.



- ④ You can select 'Destination Folder' on a 'Choose Install Location' dialog. If you don't want to change, click '**Install**' button.



- ⑤ After completing setup wizard, Click '**Finish**' button.



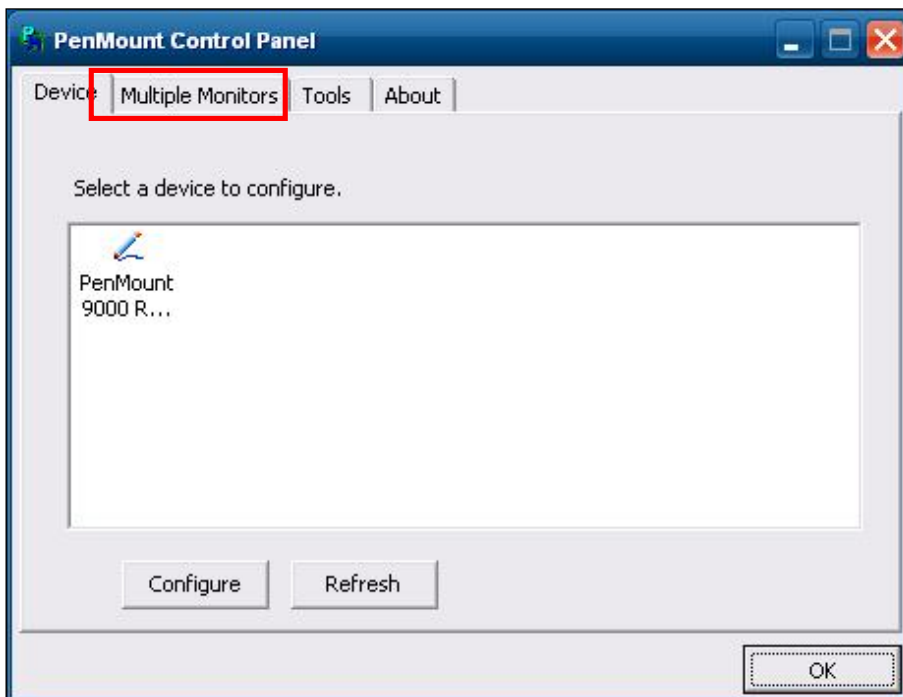
- ⑥ Click '**Finish**' button. System will be restarted.



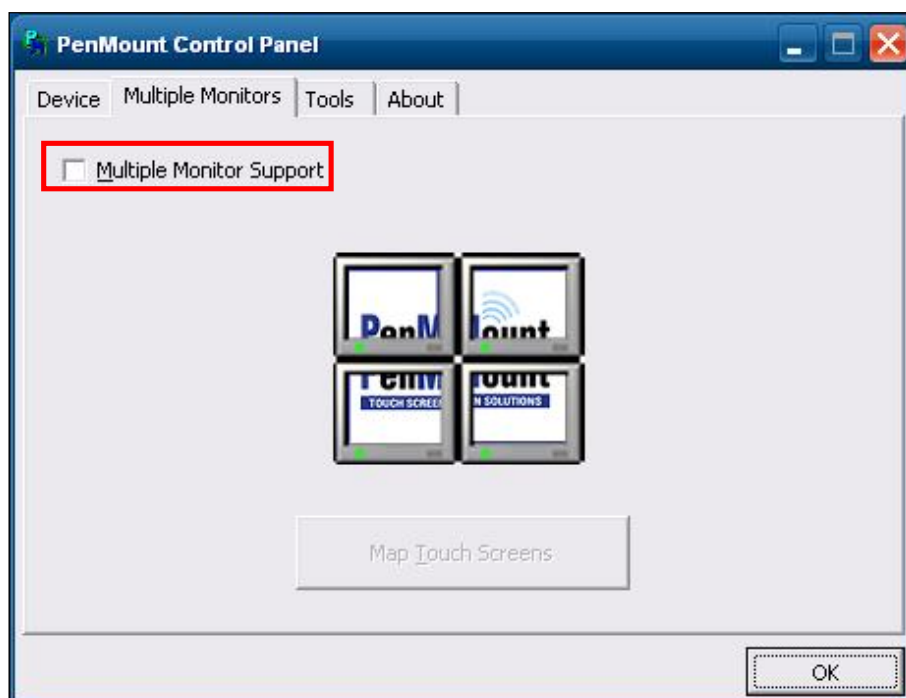
- ⑦ Click the right button of mouse on '**PM**' icon of Windows tray icons. And select '**Control Panel**' on popup menu.



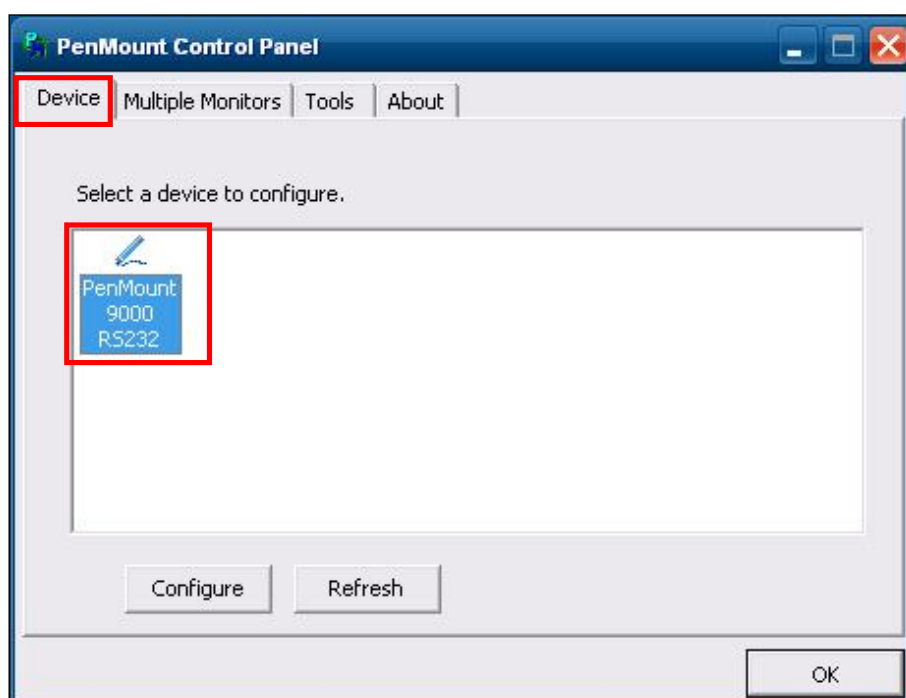
- ⑧ 'PenMount Control Panel' dialog appears. Click '**Multiple Monitors**' tab



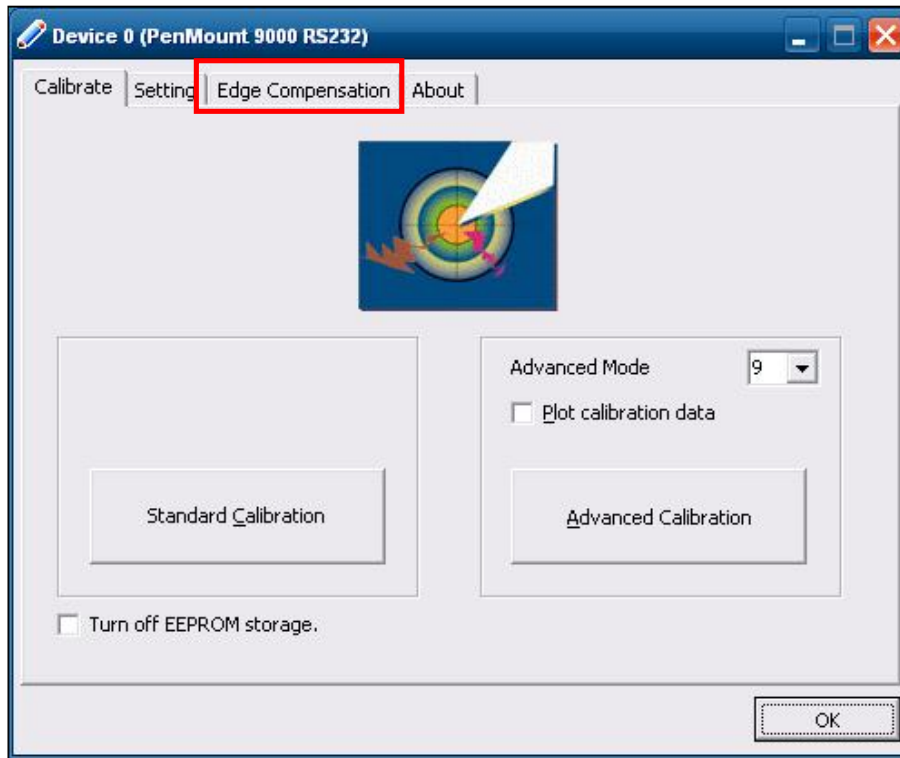
- ⑨ Uncheck '**Multiple Monitor Support**' box on 'Multiple Monitors' tab.



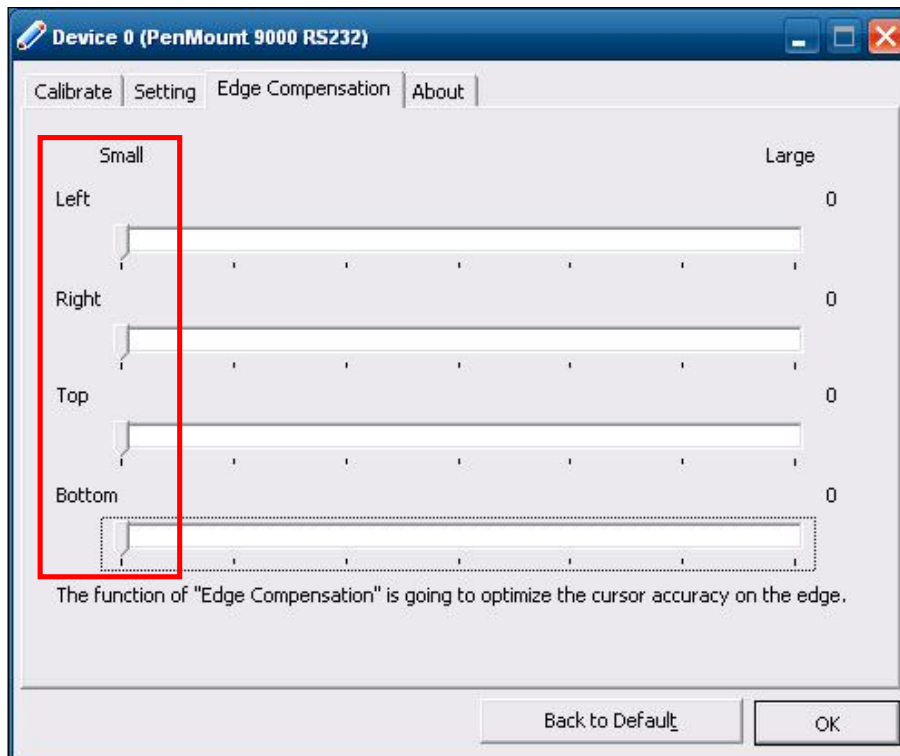
- ⑩ Double-click '**PenMount 9000 RS232**' on '**Device**' tab.



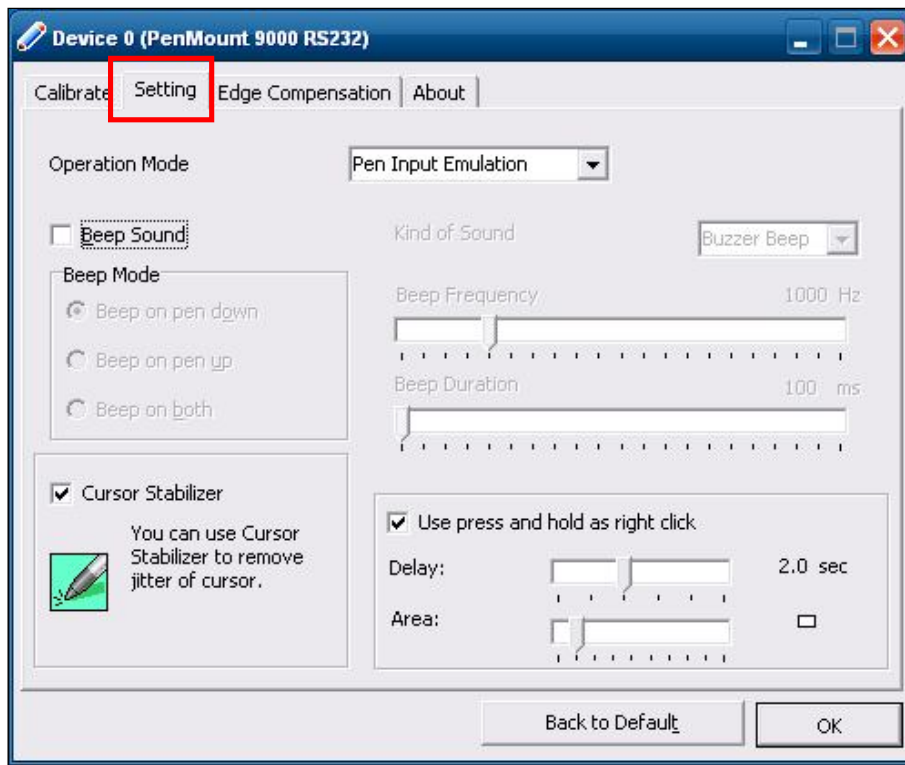
- ⑪ Click 'Edge Compensation' tab.



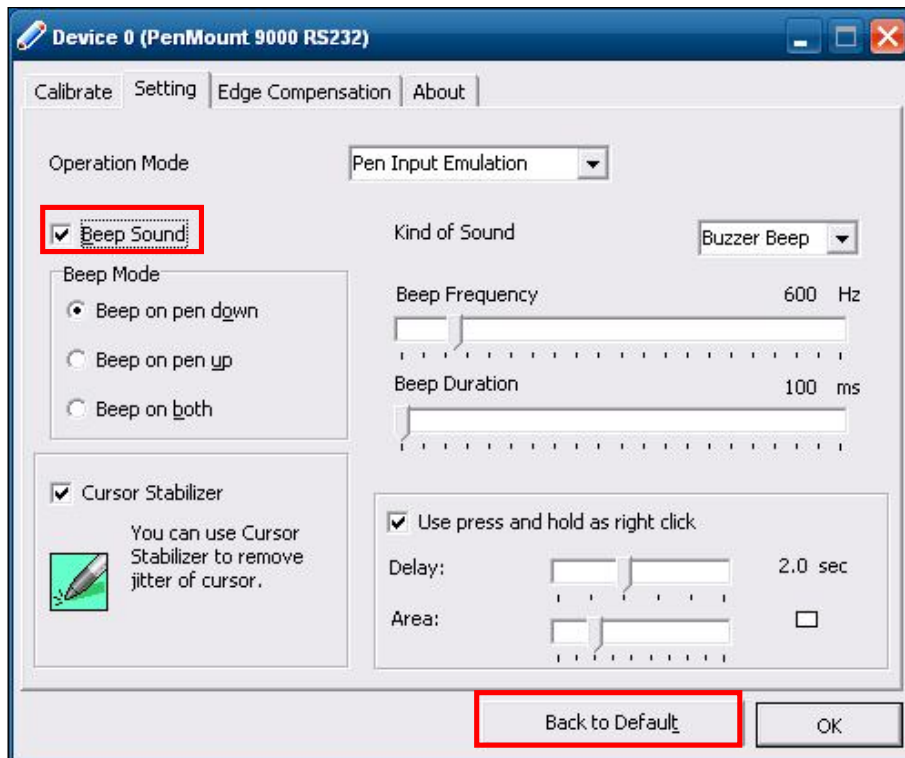
- ⑫ Move the four scroll bars to the left.



- ⑬ Click '**Setting**' tab.

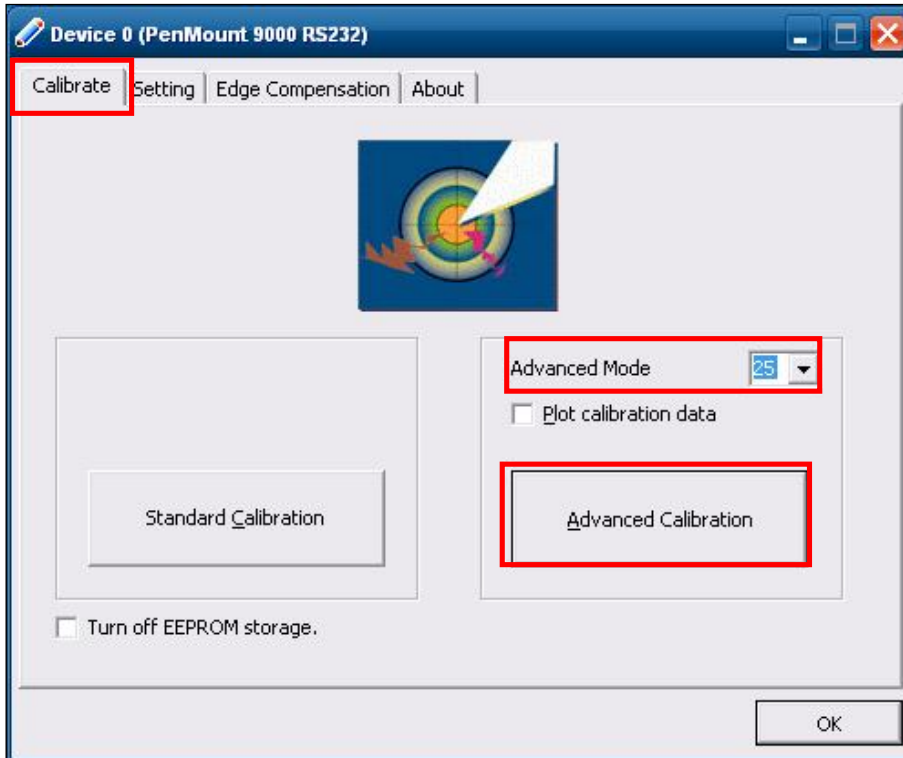


- ⑭ Click '**Back to Default**' button and check '**Beep Sound**' button.

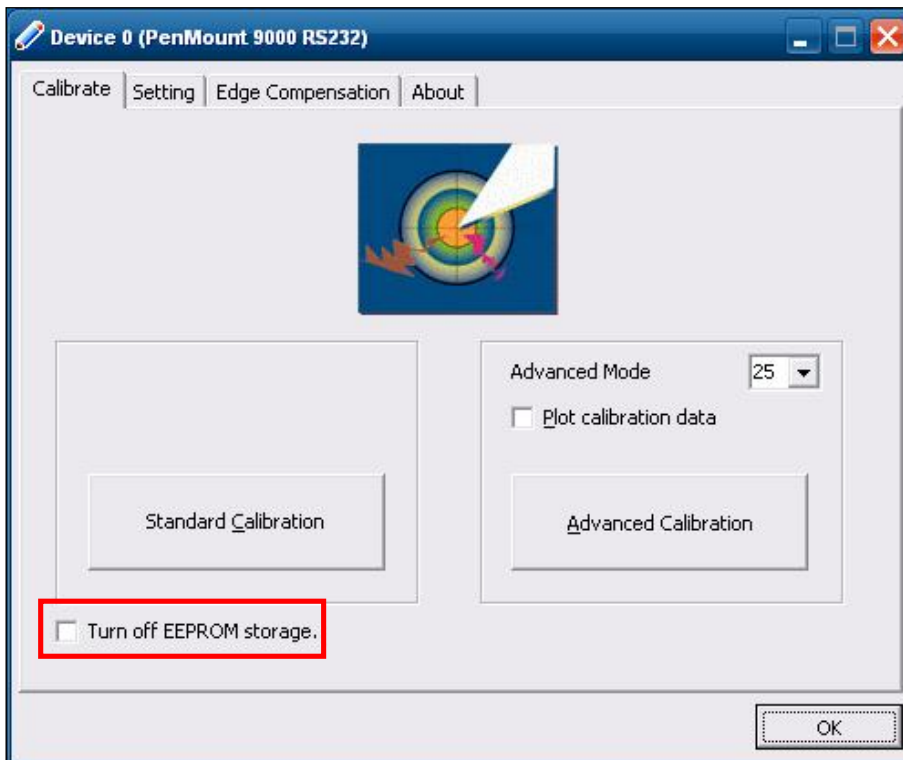


- ⑮ On '**Calibrate**' tab, select the number '**25**' of Advanced Mode combo-box list if it is possible. And then click the '**Advanced Calibration**' button.

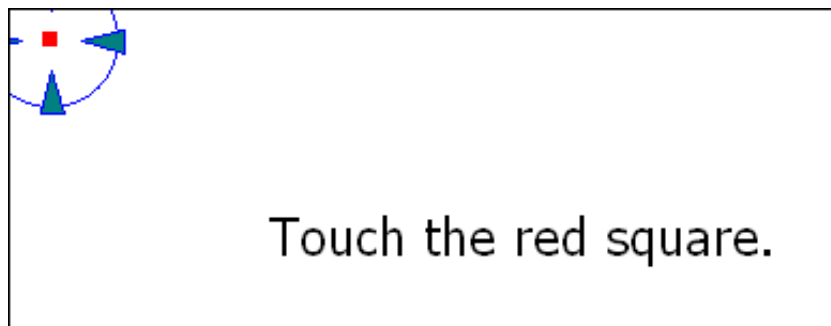
(The number of box is higher and higher, calibration will be more accurate.)



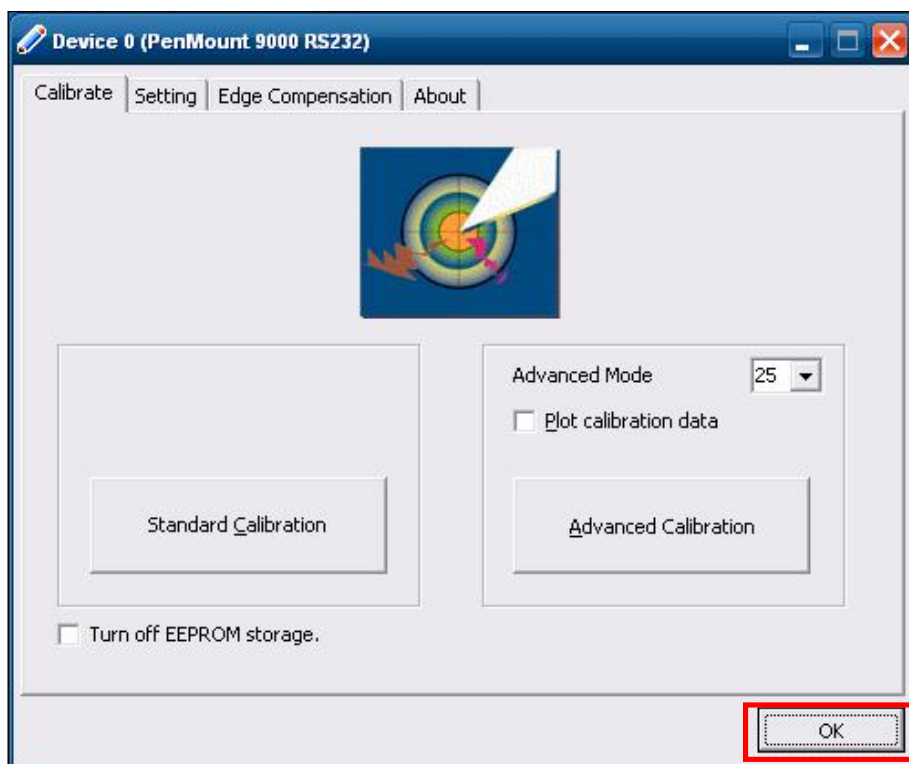
- 16 Uncheck '**Turn off EEPROM storage**' button.



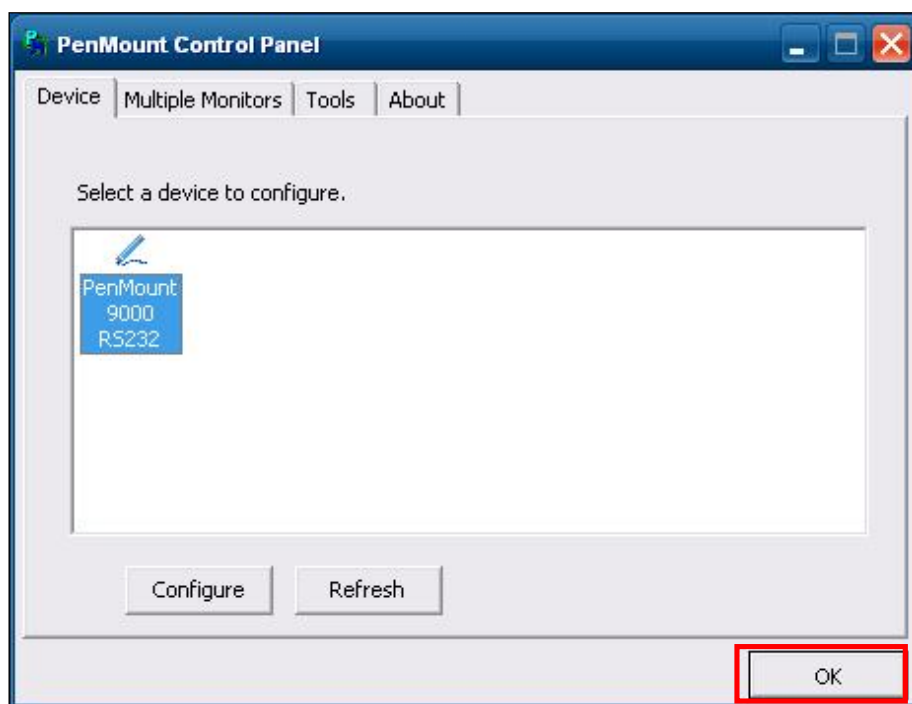
- 17 Click the red point about 2 seconds on a calibration screen. Calibration procedure will be proceeded with following messages.



- 18 Click 'OK' button.



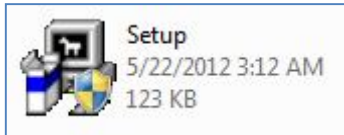
19 Click 'OK' button.



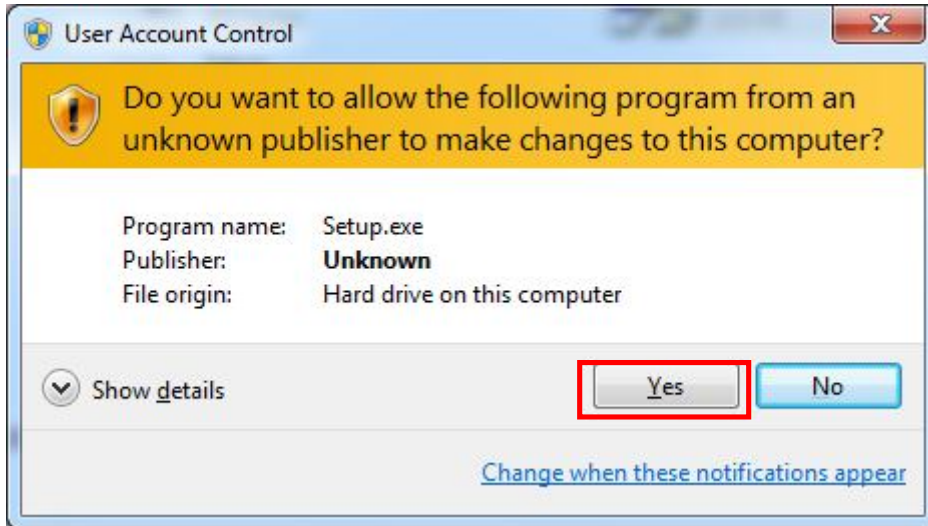
2. Windows 7

(1) Installation of Touch Driver

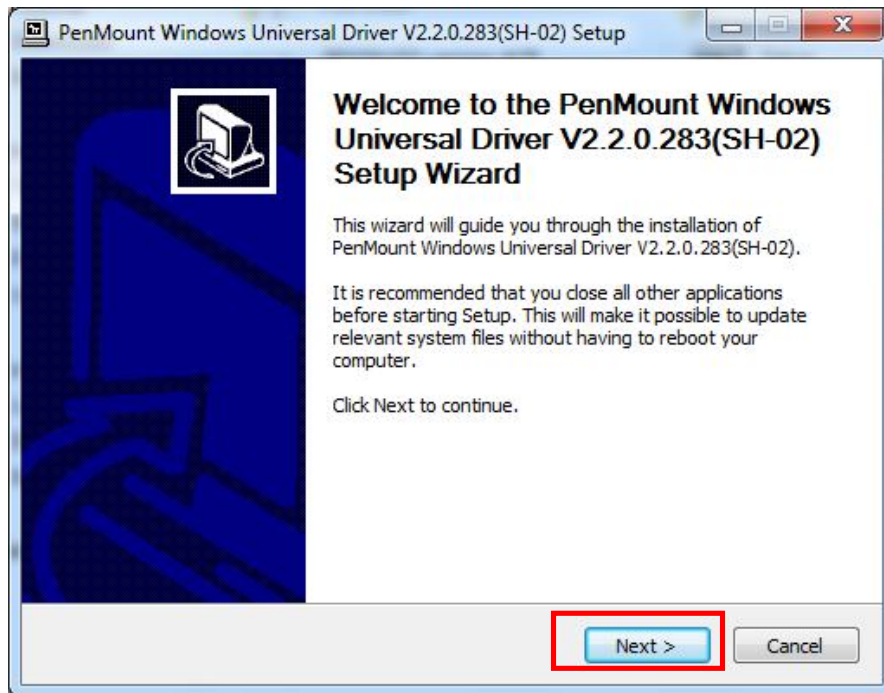
- ① Run '**Setup.exe**' file.



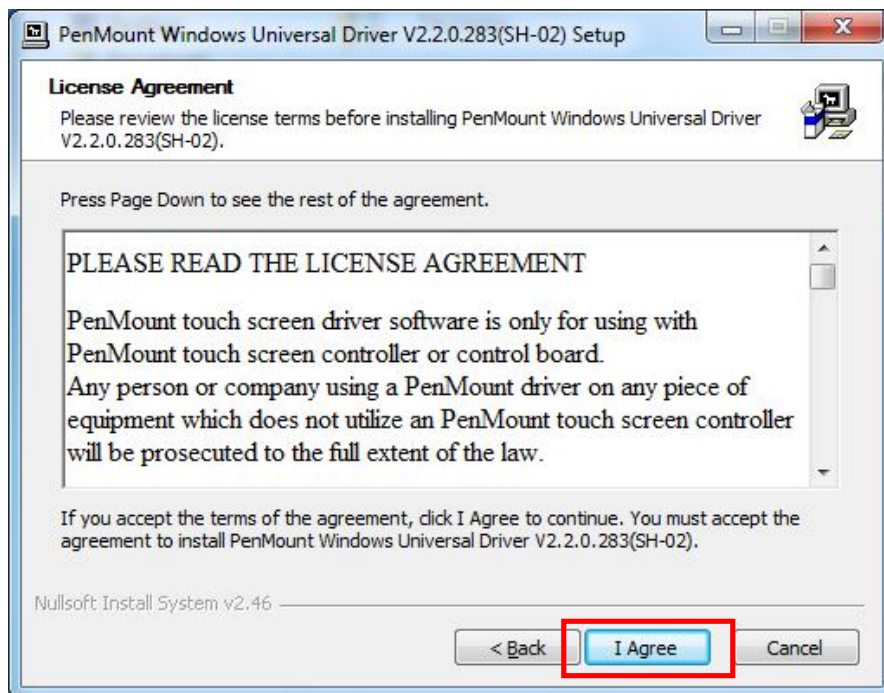
- ② Click '**Yes**' button when UAC dialog appeared.



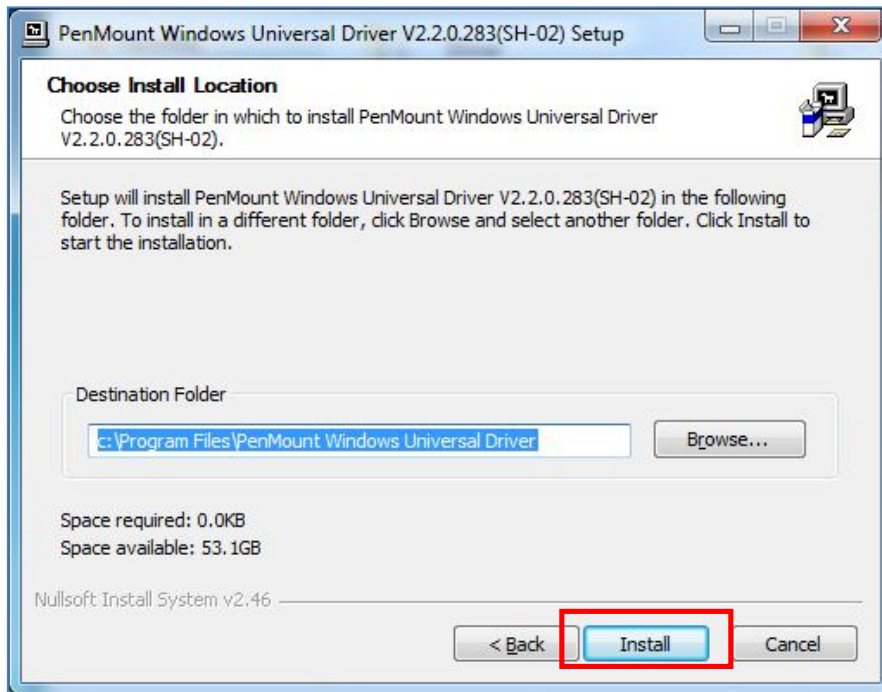
- ③ After install wizard starting, click '**Next**' button.



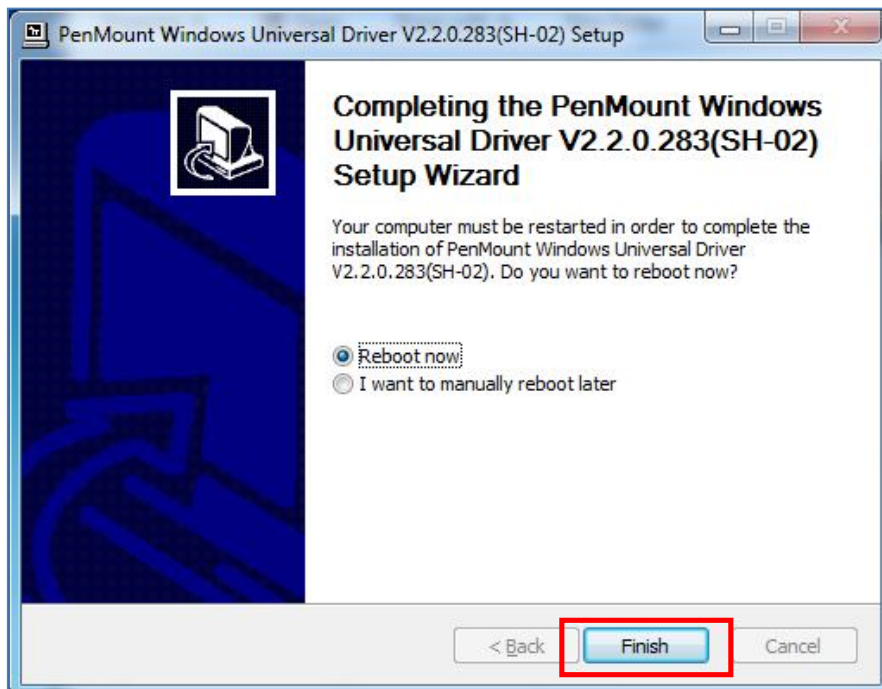
- ④ Agree with license. Click '**I Agree**' button.



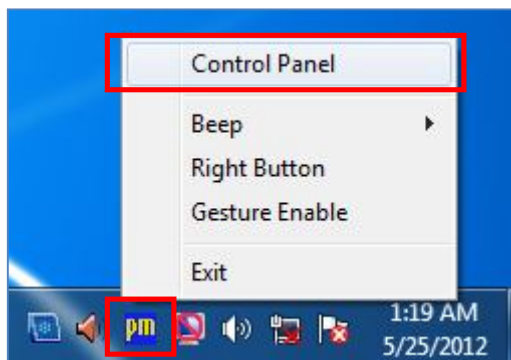
- ⑤ You can select 'Destination Folder' on a 'Choose Install Location' dialog. If you don't want to change, click **'Install'** button.



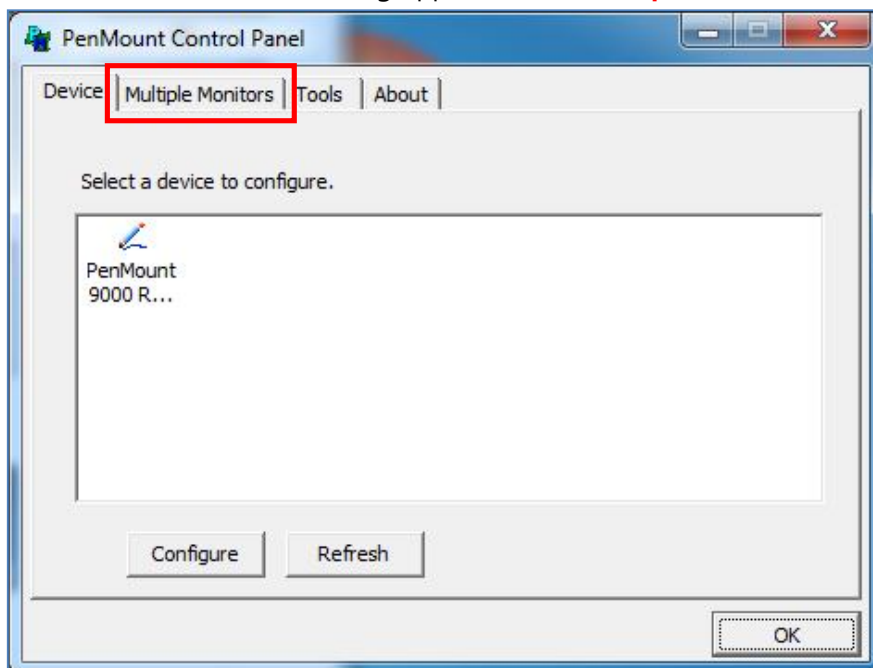
- ⑥ After completing setup wizard, Click **'Finish'** button.



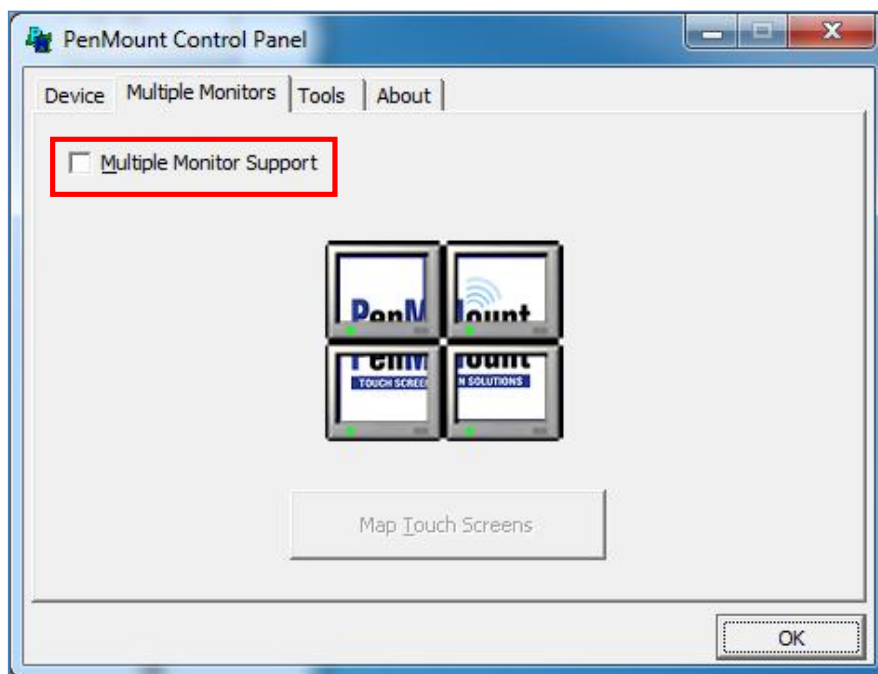
- ⑦ Click the right button of mouse on '**PM**' icon of Windows tray icons. And select '**Control Panel**' on popup menu.



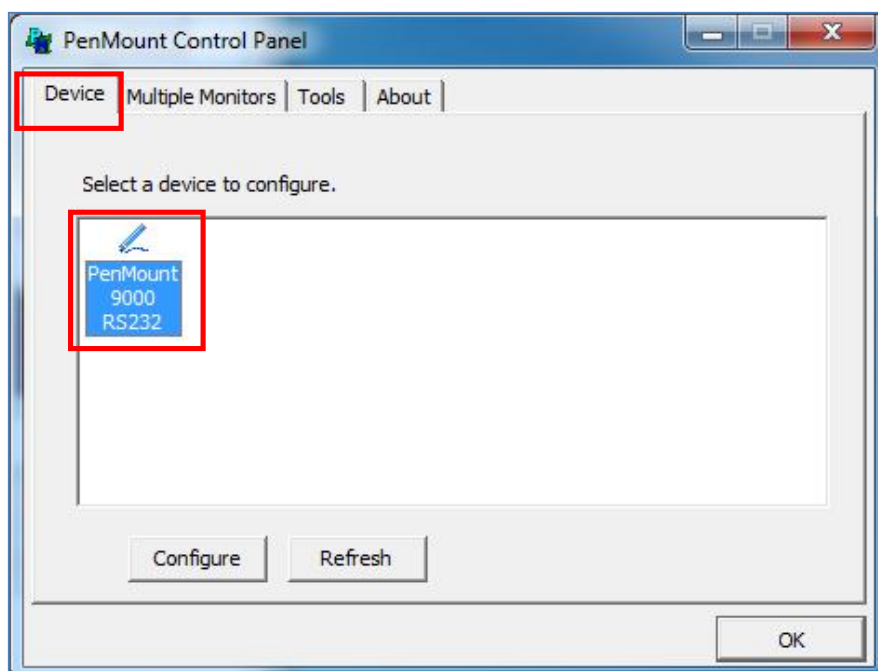
- ⑧ 'PenMount Control Panel' dialog appears. Click '**Multiple Monitors**' tab



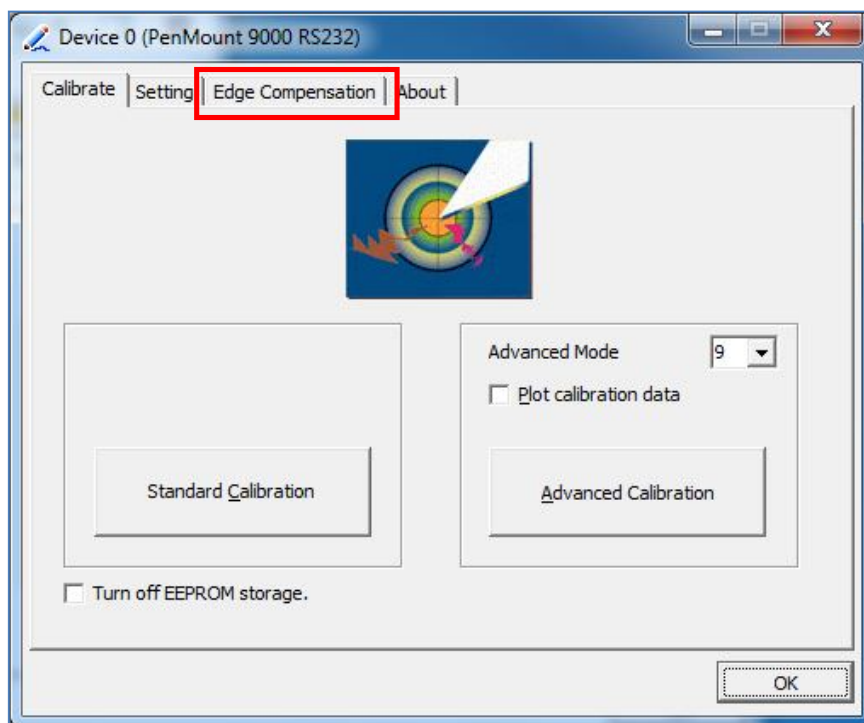
- ⑨ Uncheck '**Multiple Monitor Support**' box on 'Multiple Monitors' tab.



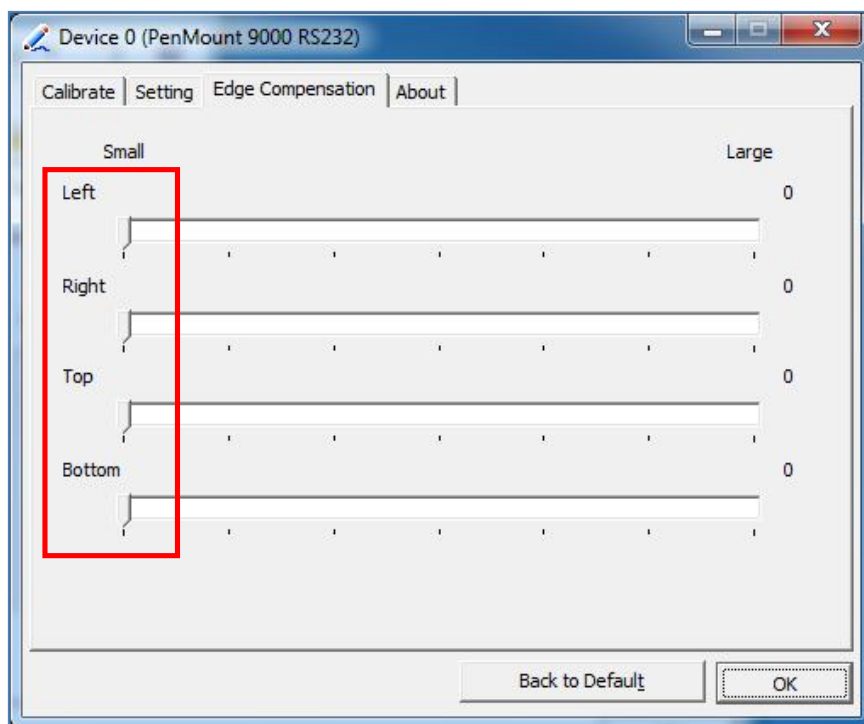
- ⑩ Double-click '**PenMount 9000 RS232**' on '**Device**' tab.



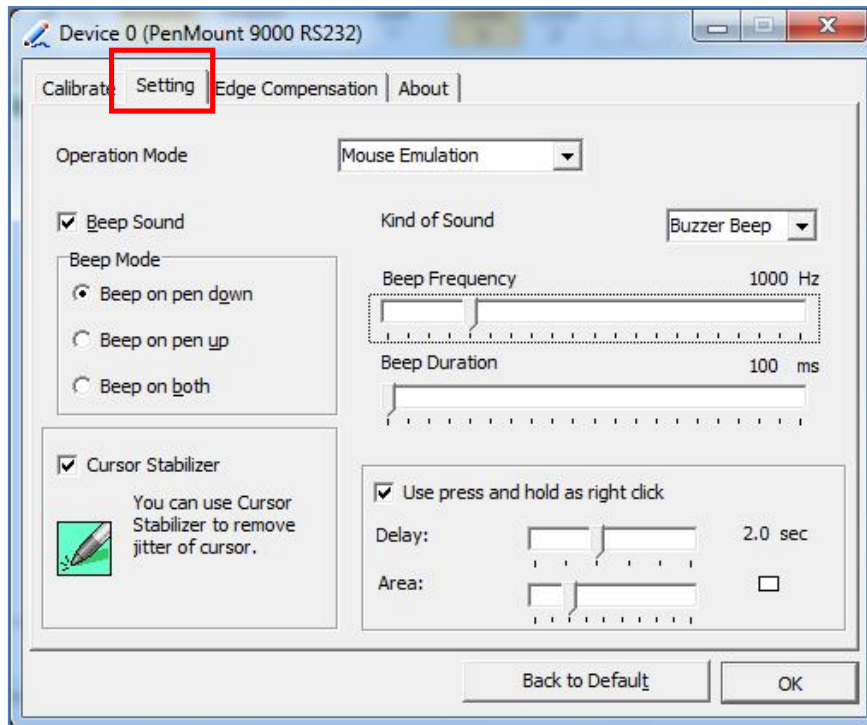
- ⑪ Click '**Edge Compensation**' tab.



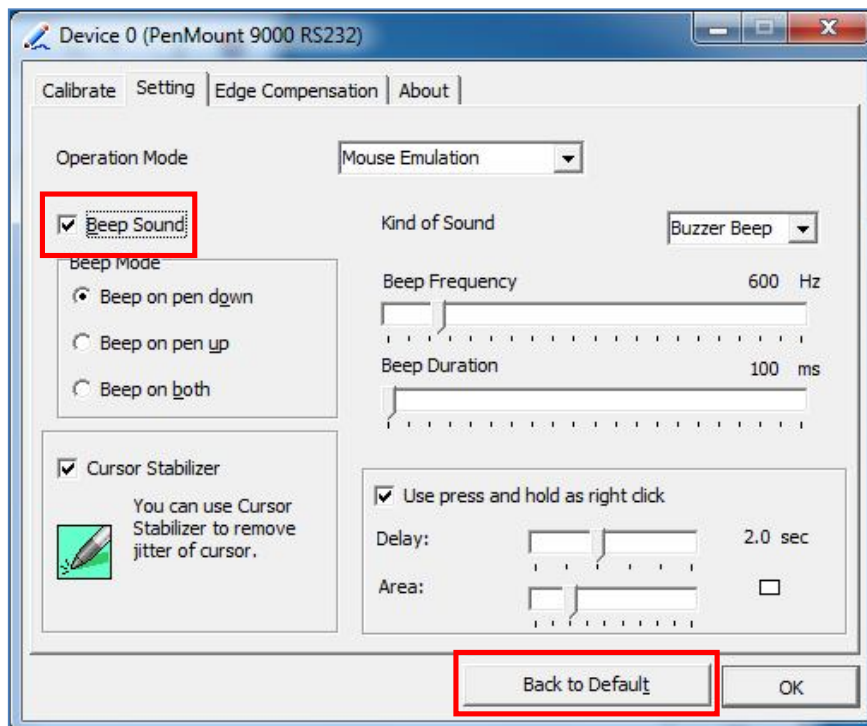
- ⑫ Move the four scroll bars to the left.



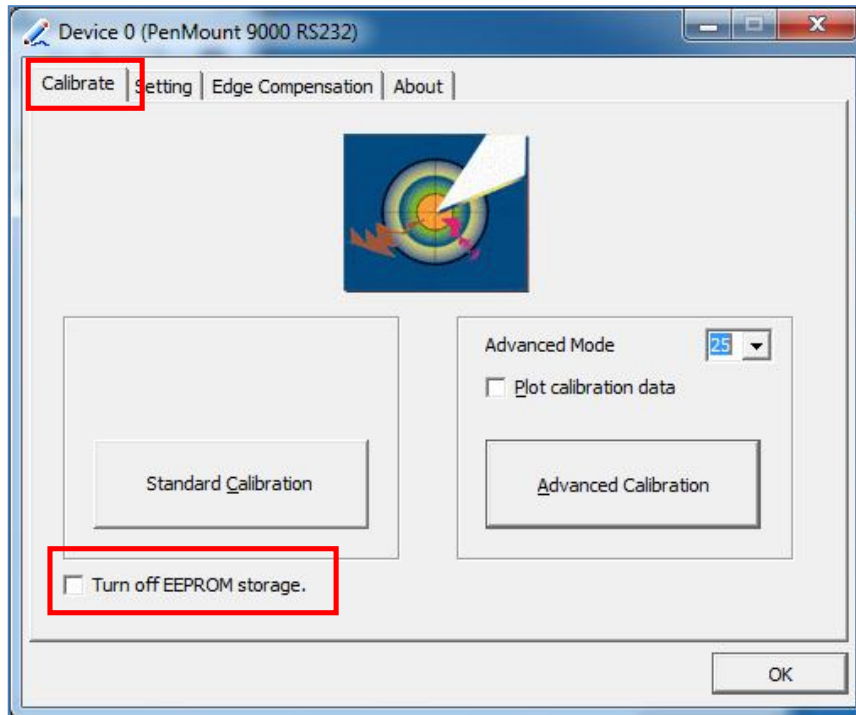
- ⑬ Click '**Setting**' tab.



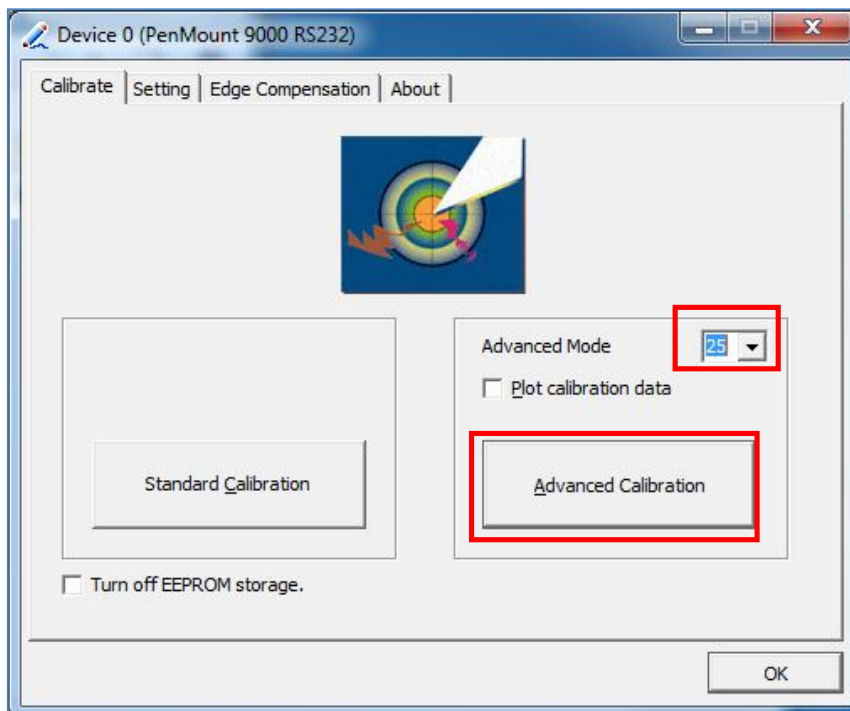
- ⑭ Click '**Back to Default**' button and check '**Beep Sound**' button.



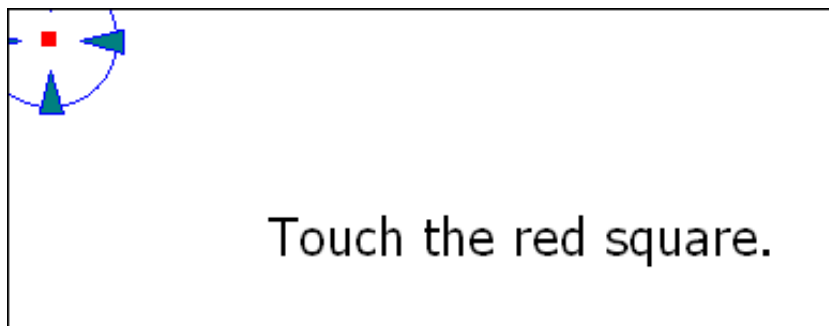
- ⑮ On '**Calibrate**' tab, uncheck '**Turn off EEPROM storage**' button



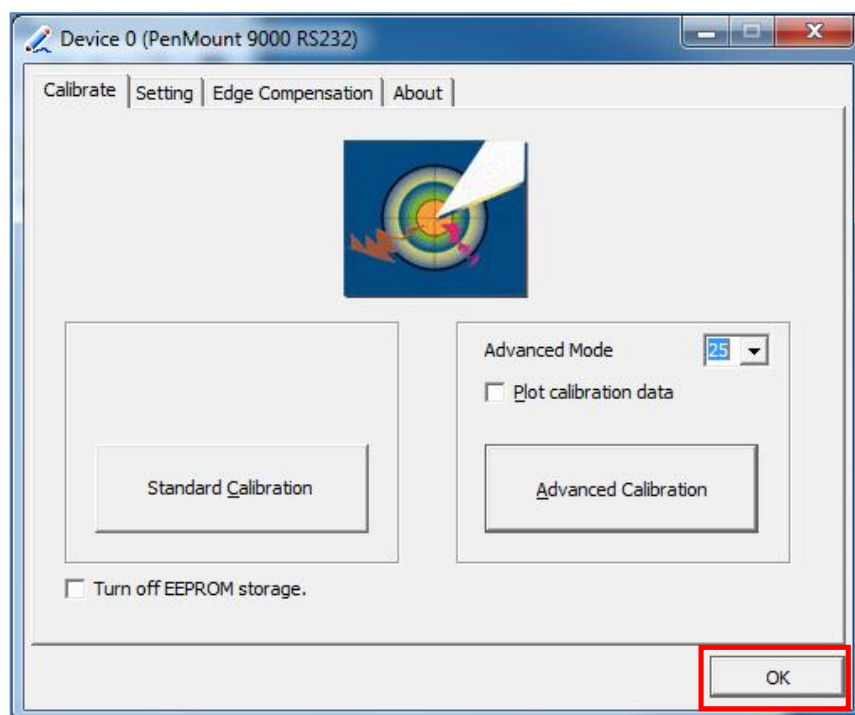
- 16 select the number '**25**' of Advanced Mode combo-box list if it is possible. And then click the '**Advanced Calibration**' button.



- 17 Click the red point about 2 seconds on a calibration screen. Calibration procedure will be proceeded with following messages.



- 18 Click 'OK' button.



20 Click 'OK' button.

